

Richard Mullin

"The only man I envy is the man who has not yet been to Africa - for he has so much to look forward to."

Chimhavira partners with Deception Valley Lodge to bring you a Central Kalahari birding experience



Eight -day birding itinerary package

From the world's biggest bird (the Ostrich) to the heaviest flying bird (the Kori Bustard) to the most numerous of all birds (the Red-billed Quelea), Botswana has a truly impressive variety and quantity of bird species. We look forward to sharing with you a wide array of birds in the Central Kalahari.

Nature of the Tour:

Deception Valley Lodge an oasis in the Kalahari of Botswana, a luxury lodge close to the famous Okavango Delta. Experience the Kalahari with Bushman at hand, to share their knowledge, while you can relax in total luxury at this unique destination. At Deception Valley Lodge you will experience the vastness of the Kalahari while enjoying some of the most prolific bird life.

A group will consist of a maximum of eight (8) and must be a minimum of twenty-five (25) years of age.

Safari dates:

Johannesburg to Johannesburg

Arrival/Start – **Daily**
Departure/End – **To be confirmed**

Basic Itinerary:

Day 1	Tour starts 08:00H	Khama Rhino Sanctuary	- Botswana
Day 2, 3, 4, 5		Deception Valley Lodge	
Day 6		Kalahari Rest	
Day 7		Mokolodi Nature Reserve	
Day 8		Witwater Guest House	- South Africa
Day 9	Departure		



Safari Cost:

USD 3,875.00 based on per person sharing
Single supplement of an additional 30% on applicable nightly rate

Our prices include:

- All transfers
- Route planning, itineraries, bookings and travel guidance
- Field guides, maps and documents required for cross-border travel
- Free airport transfers to and from our Johannesburg offices
- Our individual service
- All fuel, toll road and border fees
- An emergency medical kit, and all guides are first aid trained
- Two full meals per day plus snacks
- All drinks

Our prices exclude:

- International/regional and domestic airfares to and from collection/departure points
- The optional hire of a satellite phone and/or GPS for navigation
- Visas and personal travel insurance
- All beverages and food out of camp
- Clothing, toiletries and all other personal items e.g. cameras, sun block etc
- Fees for non-scheduled excursions, activities, entrance fees etc
- Additional Activities other than that specified above and or below.
- Costs for any upgraded accommodation to that listed above and or below
- Gratuities

Passport Visa Requirements:

We will be travelling in South Africa & Botswana:

- South Africa – Visas are generally required at the port of entry. You will be given a three-month visa which is free of charge
- Botswana – No visas are required

This information is correct as of today's date, please double check with the relevant embassy in your home country before you travel. Chimhavira cannot be held responsible to any changes to these requirements that are beyond our control.

Items of interest:

Total driving Distance: Approx 2,160 km (1,340 miles)
Diesel consumption based on 1 vehicle: 320 litres (85 UK gallons)

Borders crossed:

Martins Drift Border Post
Ramotswa Border Post

Suggestions:

African kids love asking tourists for sweets and pens. If you have space in your suitcase bring a couple bags of both with you. The kids will smile and be happy; you will enjoy it for little cost. Old clothes are good for bargaining with adults for curios or local fruits etc.

8 - Day Birding Itinerary Package

Meal Key: B – Breakfast, L – Lunch, D – Dinner

Day 1: Tour starts at 08:00 – Khama Rhino Sanctuary

In 1989 a group of Serowe residents conceived the idea of a wildlife reserve near Serowe. Serwe Pan, then a cattle post, had been a traditional hunting area teeming with wildlife and the residents wished to re-establish it to its earlier splendour. In 1993 the Ngwato Land Board allocated the land around Serwe Pan to the Khama Rhino Sanctuary Trust.

The site was chosen due to its excellent habitat for rhinoceros, central location and proximity to a Botswana Defence Force (BDF) base, which provides the Sanctuary with 24hr protection. Covering approximately 4,300 hectares of Kalahari sandveld, the Sanctuary is centred around Serwe Pan - a large grass-covered depression with several natural water holes. Serwe Pan provides prime habitat for white rhinoceros and other grazing animals, whilst the denser vegetation in the southern area of the Sanctuary is favoured by browsing animals such as giraffe.



Approximate distance: 630 km
Accommodation: Khama Chalets
Meals: L, D

Day 2, 3, 4, 5: Deception Valley Lodge

Comfort set in vibrant and rustic coloured interiors, Deception Valley Lodge is private and restful. Attention has been given to every detail ensuring you a completely different experience, in an arid Kalahari bush land stretching for miles. Each unit stands separately, on stilts connected with the main lodge by wooden walkways.

The main complex boasts a dining room, lounge and bar area decorated in warm Kalahari colours making use of Bushmen and other African artefacts. From the deck you can view activities at the nearby water hole. A curio shop and small library forms part of the complex. The lodge has an ethnic African theme and was built to fit into the surrounding bush without altering, damaging or detracting from its ambience and colour.

A swimming pool situated close to the main complex, enhances the enjoyment of guests. The boma features prominently during the African nights when guests enjoy their dinner while gazing across a clear night sky.



Approximate distance: 450 km
Accommodation: Deception Valley Lodge
Meals: B, L, D

Day 6: Kalahari Rest

To break our journey we will be stopping over at Kalahari Rest, which is a beautiful Lodge. This will allow for a late brunch at Deception Valley before our drive.

Approximate distance: 530 km
Accommodation: Kalahari Rest
Meals: B, L, D

Day 7: Mokolodi Nature Reserve

Today we offer something a little different, Mokolodi houses a reptile park, animal sanctuary, and a wildlife rehabilitation centre. Bird watching is a must with over 300 species of birds on view. If you have enough of birding why not meet and stroke the tame cheetah. An intimate experience and truly fantastic photo opportunity - up close and personal, yet perfectly safe!

This evenings accommodation is provided in self-catering chalets, which are secluded and nestled within a tranquil, lushly wooded setting overlooking a waterhole.

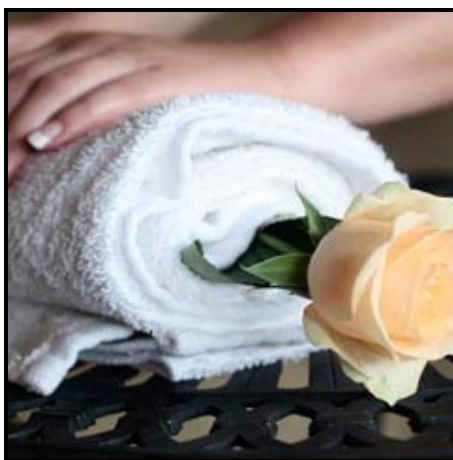
Approximate distance: 400 km
Accommodation: Mokolodi Chalets
Meals: B, L, D

Day 8: Witwater Guest House and Spa

To conclude your stay with us your last night will be slept at Witwater Guest House and Spa. Witwater Guest House and Spa imposes elegance with a warm five star hospitality flavour. The Boutique hotel-feel Guest House with its large gardens and indoor space makes it difficult to believe that it is as close to OR Tambo International airport as it is.

Indoor atriums and tasteful decoration adds to the atmosphere that make guests not want to leave. Facilities include a business corner, wireless internet service, large living and lounging areas where you can get lost in a book, the main breakfast area spills onto a patio that overlooks the pool and main garden, executive conferencing facilities for up to 10 people, Roman Bath Jacuzzi and then we have to mention the Spa?

Drawing from the ten years of experience at the five star Witwater Safari Lodge and Spa in the Limpopo Waterberg Mountains, The Spa at Witwater Guest House and Spa is of the best quality and standards. It has Double treatment facilities, for couples and friends, Single treatment rooms that can facilitate facial, body and wet treatments. Then there is a far infra red cabin with colour and aromatherapy treatment capabilities and manicure and pedicure stations ideal for day to day pampering.



Approximate distance: 630 km
Accommodation: Witwater Guest House
Meals: B, L, D

Day 9: Day of Departure

You will be transferred to the airport where you say goodbye to the guides and the group...

– End Of Services –

Arrival:

You will be met at the airport and transferred to your accommodation (where required).

Departure:

If you require an airport transfer this will be arranged for you.

Transport:

Chimhavira Overland Safaris cc use fully equipped 4x4 Land Rover Defender/Discovery vehicles.

Accommodation:

Accommodation will be in your vehicle roof top tents. Should you want to upgrade please ask your guide to assist you. Where possible your guide will try to upgrade you as to your requirements but this will be dependant on availability. Please note upgrades are not included in your Chimhavira Overland Safari cc invoice and will therefore necessitate you paying for upgrades directly.

Spending money:

Clients are advised to bring enough money to cover the purchase of curios and personal items.

Meals:

All meals are organized by the guide and are prepared by our cook. Meals are nutritious and filling, drawing on fresh local produce where possible. We buy groceries along the way, so our clients have a say in what type of meals are eaten. Please advise us of any special dietary requirements before tour commencement.

First Aid:

Our guides are trained in basic first aid, Chimhavira Overland Safari cc guides are trained to level III St John's or equivalent standard, our vehicles is equipped with a comprehensive medical aid kit. Preventative Malaria medication should be taken before the trip and throughout its duration, although it is advisable to consult a doctor prior to departure.

Luggage:

Maximum baggage allowance: 20kg. Chimhavira Overland Safaris cc stipulates this luggage allowance, as an overloaded vehicle is a danger to both the clients and the guide. This does not include photographic equipment and a small daypack. Please bring a backpack or soft barrel bag, not a suitcase. Please adhere to the allowance specified as space for luggage is limited.

Sleeping bags:

Chimhavira Overland Safaris cc can provide sleeping bags and pillows, please advise us if this is required at your time of booking. If you prefer to bring your own please feel free to do so.